



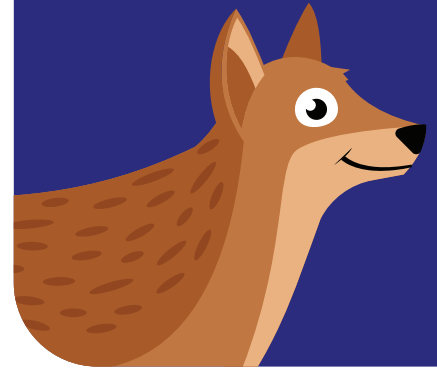
# february 2023

We all want kids who will show respect at school and at home. This month, let's work together to find fun ways to show others they are important by the words we choose and the actions we take.

## **RESPECT:**

*Showing others they are important  
by what you say and do*

# Respeto FEBRERO 2023



## DILO:

Respeto significa demostrar a los demás que son importantes con lo que dices y haces.

## CONOCELO:

### PREGÚNTALE A UN ADULTO:

- ¿Quiénes son algunas de las personas en tu vida a las que respetas? ¿Cómo les demuestras que las respetas?
- ¿Cómo te sientes cuándo las personas te demuestran respeto?

### PREGÚNTALE A UN NIÑO(A):

- ¿Quiénes son algunas de las personas a las que les demuestras respeto en la escuela?
- ¿De qué manera demuestras respeto?

## MÍRALO:

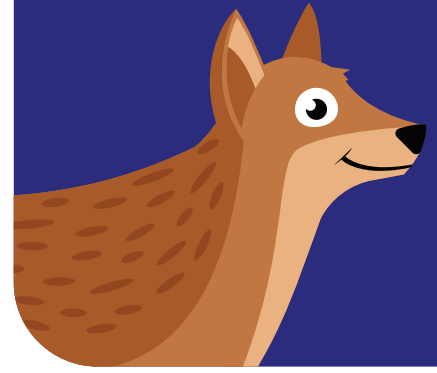
Ve este video del Smithsonian sobre los dingos (tipo de perro): <https://www.youtube.com/watch?v=AAKvY3YGreg>. También puedes leer un poco sobre los dingos. ¿Cómo demuestran el respeto a sus padres los cachorros dingos? ¿Qué podría pasar si se alejaron mucho de sus padres y de los otros dingos adultos?

## VIVELO:

En familia, elaboren una lista de "Las diez principales formas de respeto". Piensen en diez cosas en las que estén de acuerdo, qué demostrarán que respetan a los otros miembros de la familia. Hagan un reto amistoso para ver quién puede hacer consistentemente las diez cosas de la lista. Para hacerlo más divertido, creen una canción de respeto familiar que ayude a recordar que siempre se debe mostrar respeto.

# PHASE

Respeto  
FEBRERO 2023



## Todos queremos saber si le importamos, que somos importantes en alguna forma.

Una manera de cómo podemos descubrir si somos importantes es a través del trabajo. Tal vez, tu niño/a no está listo a trabajar 8 horas al día en una oficina (¡Quién lo está!), pero si él o ella pueden hacer algo significativo para ayudar a la familia y otros. Como sacar la basura, lavar los platos o darle la mano a un vecino, existen tareas apropiadas con la edad que todo niño puede hacer.

Hacer este trabajo te va a ser sentir importante, necesitado y conectado con otros.

**Entonces, no te olvides:** Este mes, busca trabajo que pueda desarrollar hábitos de independencia en tu hijo.

# february 2023

RESPECT // DINGO // ROYAL BLUE

**The dingo, with its ginger color** and long, lean looks, is easily recognizable as Australia's wild dog. Its genetics and behavior fall in between its closest relatives, wolves and domestic dogs. Dingoes have lived around humans for thousands of years, but they're not usually interested in being trained.

Most dingoes are found in Australia, with smaller numbers in some parts of Asia, where they often live near villages and eat scraps. It is thought humans brought dingoes to Australia from Asia about 4,000 years ago. In Australia, they occupy a variety of terrain, from woodlands to plains to mountainous areas, as long as access to a water source is nearby. They have a varied diet and generally weigh from 26 to 53 pounds.

Dingoes, younger ones especially, are sometimes solitary, hunting small animals. They will join with others to hunt larger prey such as kangaroos. Dingoes often form packs of three to a dozen or so members, with dynamics similar to those of

wolf packs. Only the top male and female are allowed to breed and bring up the next generation. Other pack members help out with the pups.

Though dingoes rarely bark, they howl – especially at night. They have territories and defend these from other packs. Because dingoes sometimes prey on sheep and other farm animals, many ranchers in Australia consider them pests. The "Dingo Fence," spanning more than 3,000 miles, aims to keep dingoes out of prime sheepherding areas. Rabbits are considered pests on farms as well, and dingoes help keep rabbit numbers down.

**RESPECT:** *Showing others they are important by what you say and do*



Like wolves, dingoes live in packs and show respect to pack leaders.

# february 2023

RESPECT // DINGO // ROYAL BLUE

Though ancient Egyptians apparently loved blue, it wasn't until the Middle Ages that the color became favored by Western European countries. That said, ancient Celts painted themselves blue, and blue dye was used by Anglo-Saxons, Vikings, and others. As a named color, "royal blue" first appeared in the early 1800s in England, when dressmakers competed to make something special for Queen Charlotte. Now considered a shade lighter than navy blue, royal blue is more saturated. Variations include "queen blue" (a medium tone) and "imperial blue" (darker). In addition to its royal roots, this deep blue color suggests trustworthiness and authority.

***RESPECT: Showing others they are important by what you say and do***